

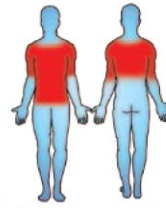


Unit Dimensions (mm) LxWxH : 1710x1710x2140

Certified by TUV to EN 16630



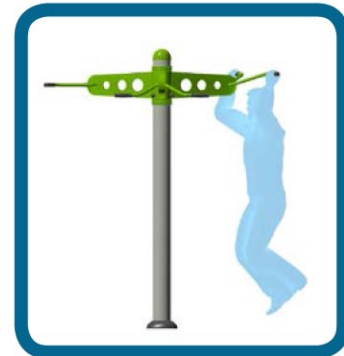
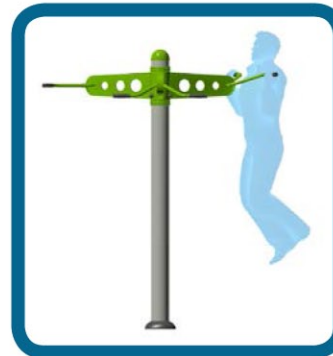
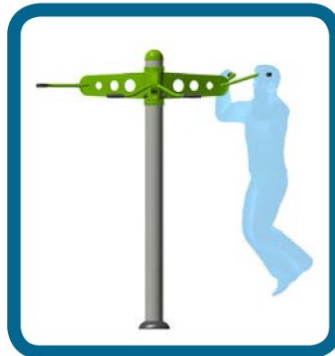
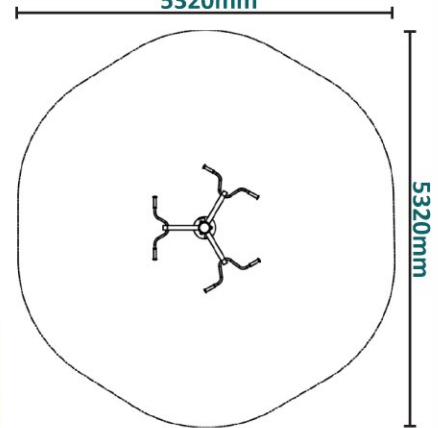
Suitable for users over 1400mm tall.



Unit Weight : 61kg
Unit Free Fall Height : 1958mm
Area Needed: 5320mm x 5320mm

Safety Spacing

5320mm



A simple item, but provides of the best exercises for building strength in the upper body.

The workout Range features individual fitness stations which offer an environmentally friendly outdoor fitness facility. Each unit is designed to target a specific muscle group, creating a variety of activities which can create a full body workout or aid recuperation after accident or illness. Workout units are available in three attractive colour combinations : blue and silver, green and silver or red and yellow.

(Surface diagram to scale 1:100 on A4)

(User diagram shows unit with a 1.8m tall adult)

