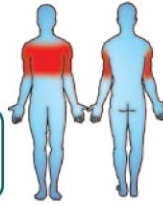




Unit Dimensions (mm) LxWxH : 2060x682x1951

Certified by TUV to EN 16630

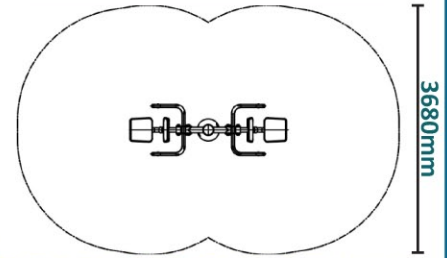


Suitable for users over 1400mm tall.

Unit Weight : 92.5kg  
Unit Free Fall Height : 690mm  
Area Needed: 5060mm x 3680mm

## Safety Spacing

5060mm



This piece of equipment will provide an upper body workout focusing on the chest and arms.

This unit will develop and strengthen the muscles.

The workout Range features individual fitness stations which offer an environmentally friendly outdoor fitness facility. Each unit is designed to target a specific muscle group, creating a variety of activities which can create a full body workout or aid recuperation after accident or illness. Workout units are available in three attractive colour combinations : blue and silver, green and silver or red and yellow.

(Surface diagram to scale 1:100 on A4)

(User diagram shows unit with a 1.8m tall adult)

